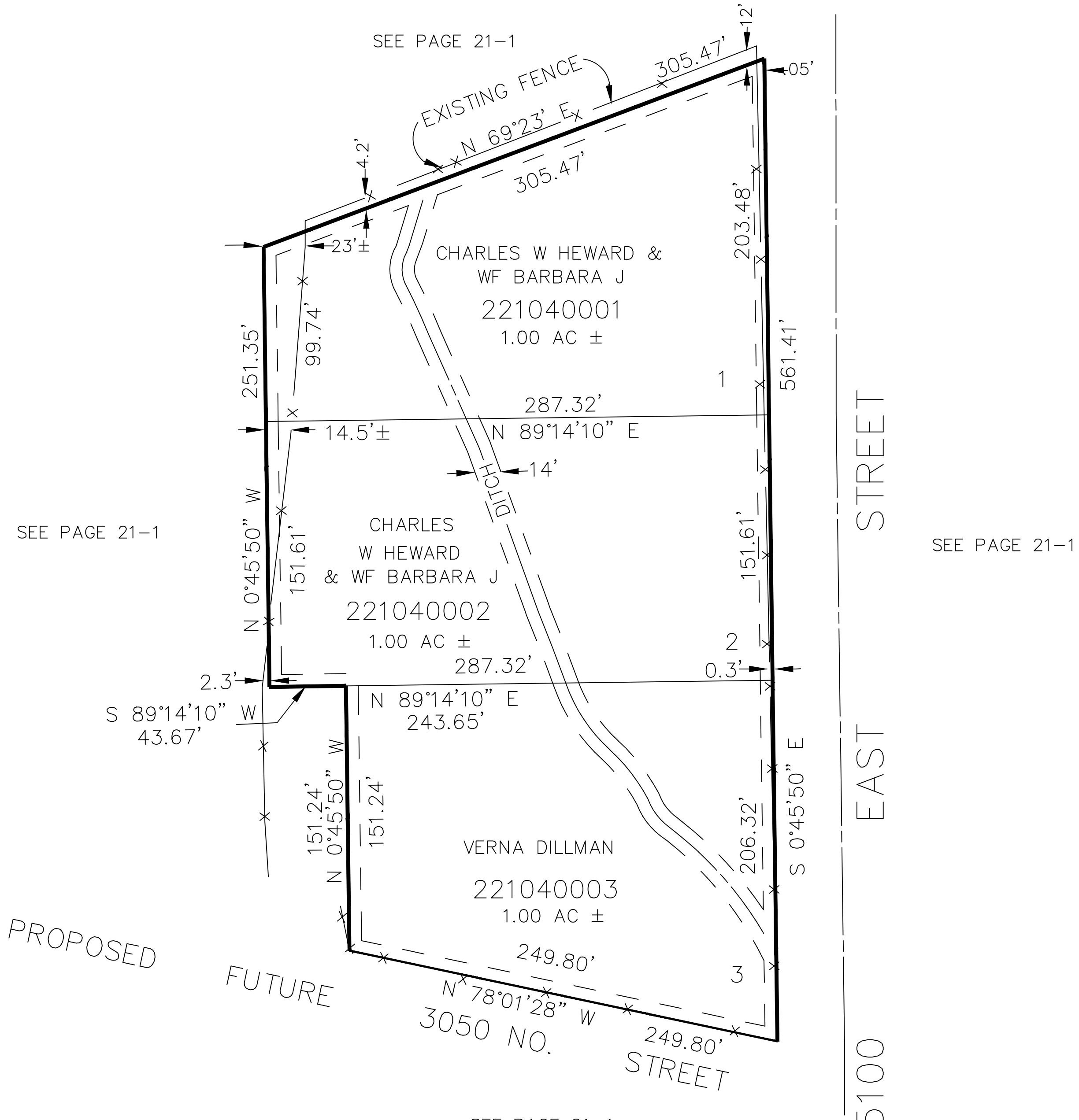


PART OF THE W. 1/2 OF SEC. 27, T.7N., R.1E., S.L.B. & M.  
**IRENE OGDEN SUBDIVISION NO. 1**

IN WEBER COUNTY

TAXING UNIT: 28

SCALE 1" = 50'



7' UTILITY & DRAINAGE EASEMENTS EACH SIDE OF PROPERTY LINES AS INDICATED BY DASHED LINES EXCEPT AS OTHERWISE SHOWN.

\* LOT 4 VACATED  
 FEB 28, 1991 BK 1595 PG 55

FOR COMPLETE ENG DATA SEE ORIGINAL DEDICATION PLAT IN BOOK 31, PAGE 44 OF RECORDS.